

Crime and Disorder Reduction Strategy 2025 - 2028



CONTENTS

3

Foreword

4

Introduction

5

The Tendring
District

6

Tendring
Community Safety
Partnership (CSP)

7

Purpose and Aims

Structure and
Governance

Community Safety
Partnership
Ambitions

8

Community Safety
Partnership
Ambitions

9

Reported Crime
Reported Anti-
Social Behaviour

10

What did our
residents say

CSP Priorities

What success
looks like

11

Delivery

12

Priority One

14

Priority Two

15

Priority Three

16

How will we know
we are on track

17

Finance and
Resources

Supporting
strategies and
plans

Foreword

Tendring District Council in collaboration with the Community Safety Partnership (CSP) is pleased to present our Crime and Disorder Reduction Strategy for 2025 – 2028. It sets out our priorities for reducing crime and disorder and Anti-Social Behaviour (ASB), whilst protecting vulnerable people across Tendring over the coming three years.

Through working together, the CSP has achieved many successes in reducing crime, disorder and ASB, protecting those who are vulnerable and making Tendring safe and secure for residents, businesses and visitors. We are proud of these achievements but know that more needs to be done to make Tendring safer.

As a CSP, we recognise that the challenges facing our children, young adults and families have evolved and continue to do so. For example, criminal gangs are targeting children to move drugs in and out of towns and other areas, including in Tendring. This is a national issue, but we need to be aware of criminal gangs, and to be able to spot the signs that our children may be being targeted.

Tackling violence against women and girls is a top priority for the Central Government. This follows the tragic deaths of Sarah Everard, Balvinder Gahir, Bibaa Henry, Nicole Smallman and Julia James, and an increase in reports of domestic abuse. Tackling violence against women and girls is also forefront of the CSP's agenda. Our ambition is to increase support for victims and survivors, increase the number of perpetrators brought to justice and reduce the prevalence of violence against women and girls.

We will work in partnership across the CSP & Health and Wellbeing Board and with our partners and communities to achieve progress on our priorities during the lifetime of this strategy and seek to bring about real change for residents and visitors to Tendring. The Council and the CSP bring the opportunity for organisations and groups to come together to tackle crime and disorder and ASB in Tendring and create an environment where people and communities can flourish, the CSP remains committed to making Tendring safe.



Councillor Gina Placey
Cabinet Member for Partnerships at Tendring District Council.
Chair of Tendring Community Safety and Health and Wellbeing Board.



Introduction

The Crime and Disorder Reduction Strategy 2025 – 2028 sets out the vision of Tendring District Council and the Community Safety Partnership and how it aims to work with others, to deliver community safety outcomes for the residents of the District.

This strategy supports the work of the partnership in understanding the patterns and trends relating to crime and disorder, anti-social behaviour and community safety issues in the District, enabling it to respond to its strategic priorities, ensuring focus and the appropriate allocation of resources to tackle the crime and anti-social behaviour having the most impact on our residents, visitors and businesses.

Collaborating with our partners is crucial in delivering our aims and this strategy sets out the range of responsibilities and governance by which we will ensure effective delivery.

Whilst this strategy outlines the priorities for the coming three years and it is not envisaged for these to vary significantly during this time, the partnership will undertake an annual strategic assessment, looking at data, patterns and trends to provide assurance that the strategy remains focused on the key issues and fit for purpose.

It is an ambitious strategy that confronts difficult issues that cannot be resolved by any single agency, including serious violence and knife crime, drugs and gangs, domestic abuse, the criminal exploitation of young children, young people and vulnerable adults, modern slavery and hate crime and the impact of these on our local communities, town centres and businesses.



The Tendring District

Tendring forms part of the North Local Policing Area (LPA). This area also includes Maldon, Braintree, Uttlesford, Colchester and Chelmsford.

The Tendring District has many geographic, demographic and economic characteristics that make it distinctive from other areas.

Tendring enjoys over 36 miles of coastline, award-winning sandy beaches, numerous coastal towns providing everything from the traditional pleasures of the seaside to maritime heritage, a variety of beautiful and picturesque villages and one of the busiest harbours in Europe. Our coastal geography is our greatest asset but also presents us with difficult and expensive management issues.

A large majority of people living in Tendring consider it a good place to live, which is reflected in the number of individuals who have decided to retire to the area. A very high proportion of our residents are over the age of 65. Overall population is growing rapidly and is predicted to grow from 146,000 in 2009 to 170,000 by 2026.

The Tendring District has the highest percentage of residents aged 65 and over in Essex (29.5%), 9% higher than the Essex average (20.5%). The proportion of Children and Young People aged 0-15 (16.5%) and 16-64 years olds (53.9%) are lower than the Essex average (18.9%, and 60.6%). This is also the lowest percentage of 16 to 64-year olds (working age) in the county.

The population count at the 2021 Census was 148,300.

The largest town in the Tendring district is Clacton-on-Sea, with a population of over 53,000.

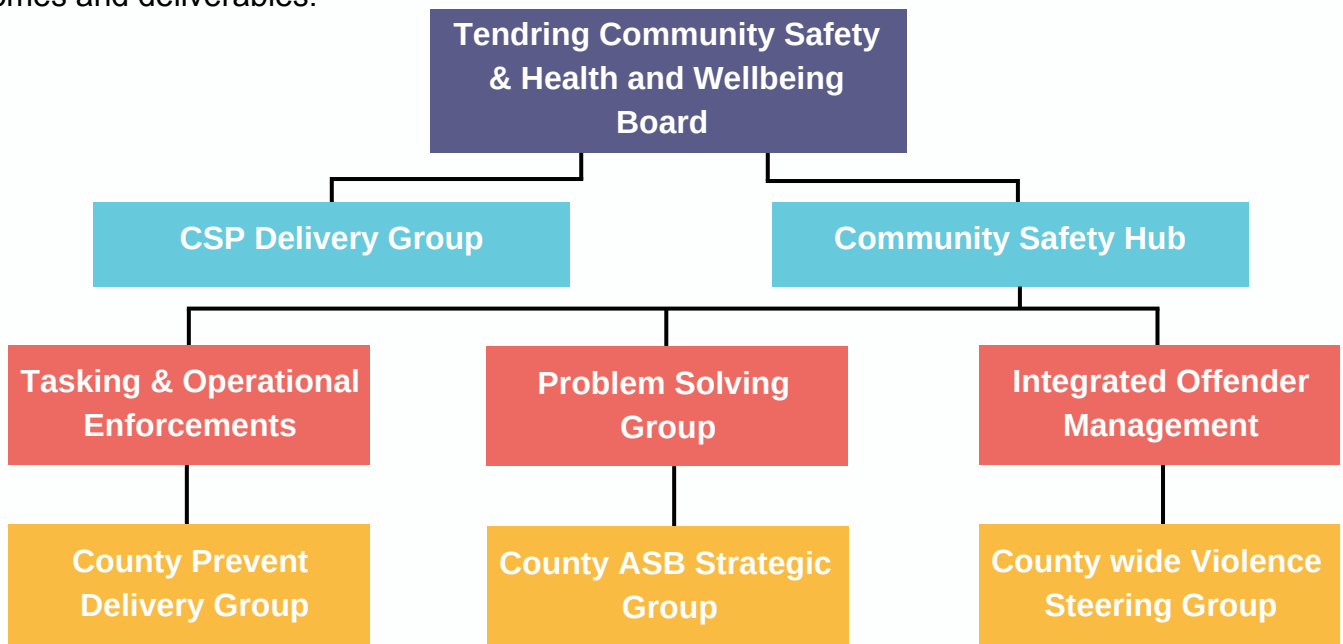


Purpose And Aims

This Crime and Disorder Reduction Strategy is the strategy of Tendring District Council and the Tendring Community Safety Partnership, it sets out our ambitions for the partnership and the district and our strategic priorities. It details the outcomes we wish to achieve, the approach we will take to deliver them and resources. It outlines the range of responsibilities and priorities and is an important tool to help focus our effort and resources on the right things.

Structure And Governance

The structure and governance arrangements are designed to offer a strong approach to partnership working, providing opportunities for agencies to work together to focus on established strategic priorities, outcomes and deliverables:



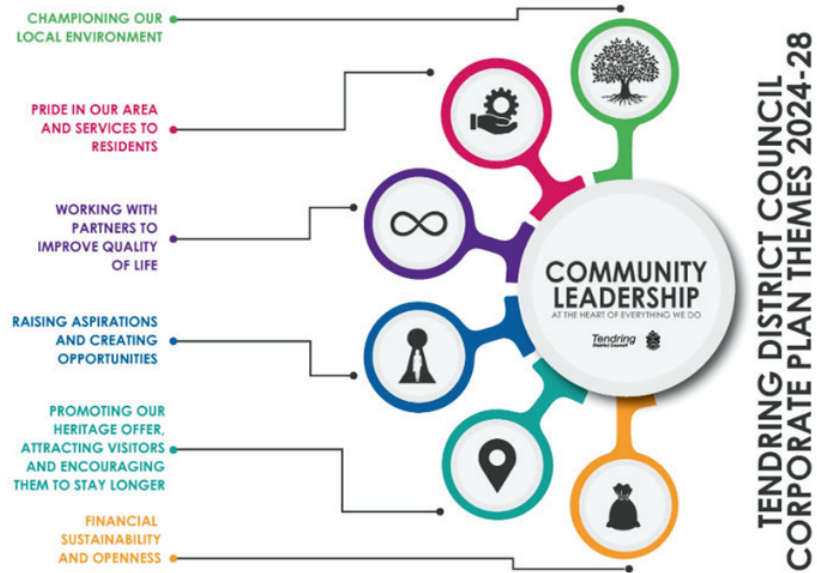
Community Safety Partnership Ambitions

People – We want Tendring to be a place where people feel safe, where local communities are aware of abuse, harm and exploitation and are confident to raise their concerns with local agencies, preventing themselves and others becoming victims of crime.

Place – We want Tendring to offer a high quality of life for all residents through attractive, liveable, accessible and safe neighbourhoods and towns and will work together to protect geographical locations where crime and anti-social behaviour occurs, using all available tools and powers to create community reassurance and reduce the fear of crime. This strategy aligns the key themes and ambitions of the District’s ‘Our Vision’ Corporate Plan 2024 – 2028 and those of the Essex Police Fire and Crime Commissioner.



“Listening to and delivering for our residents and businesses”



The strategy also aligns to the Changing Futures Strategy (Essex County Council Strategy), which focuses on supporting adults in contact with the criminal justice system, as well as homelessness, mental ill-health and substance misuse issues.

We will focus our efforts and resources on four strategic priorities for community safety. These priorities are based upon the annual strategic assessment of crime and disorder issues across the District and reflect outcomes from public consultation and legislative requirements and the alignment of the strategy with other agencies priorities.

The CSP’s priorities are as follows:

- Tackling ASB and the root causes of ASB
- High Harm Violence (with a focus on Violence Against Women and Girls and Domestic Abuse)
- Drug and knife enabled Serious Violence (Gangs and County Lines)
- Emerging threats and Trends such as Shoplifting, Vehicle Crime, Arson & Criminal Damage

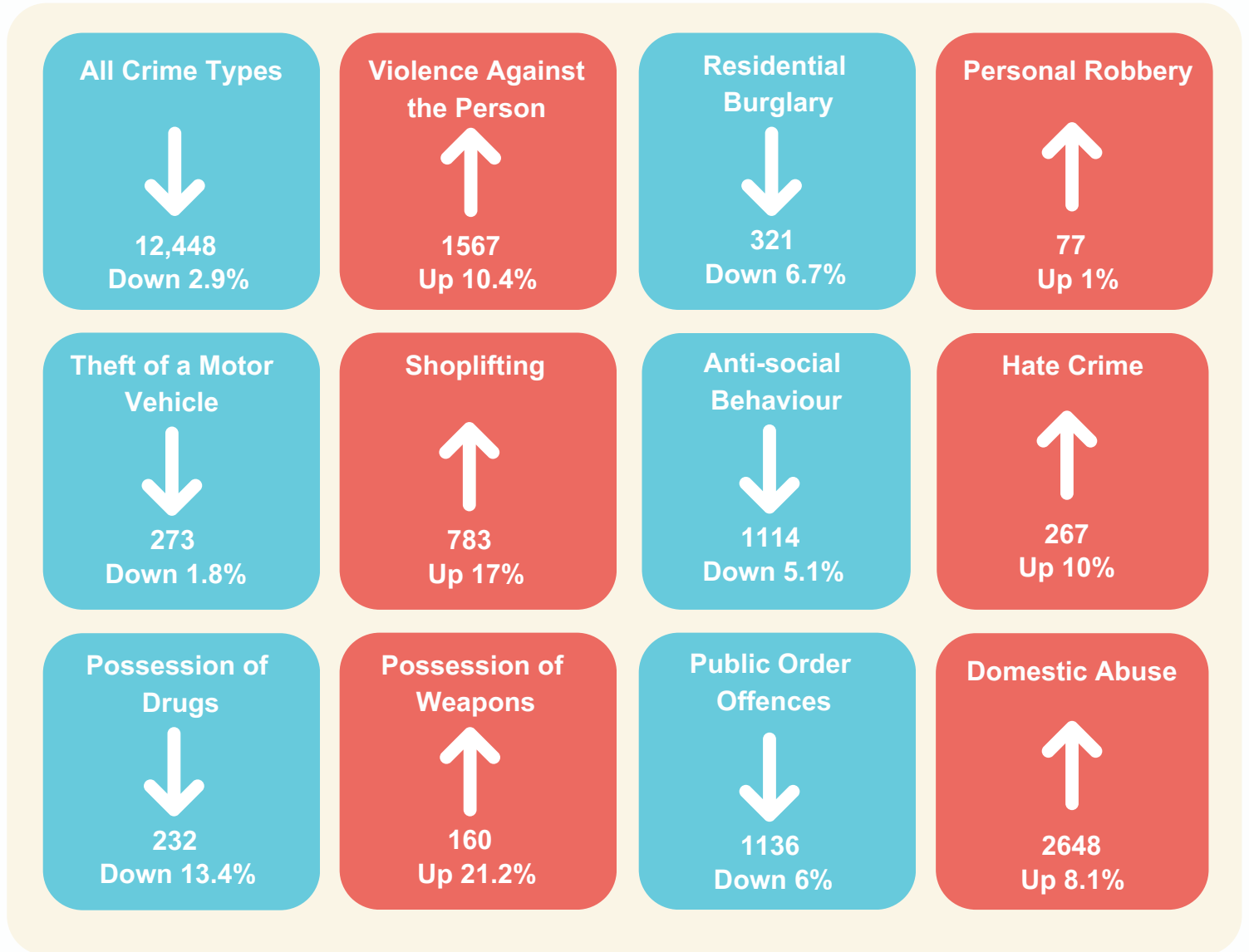
The partnership considers that focusing its efforts on these priorities will be the most effective use of resources.



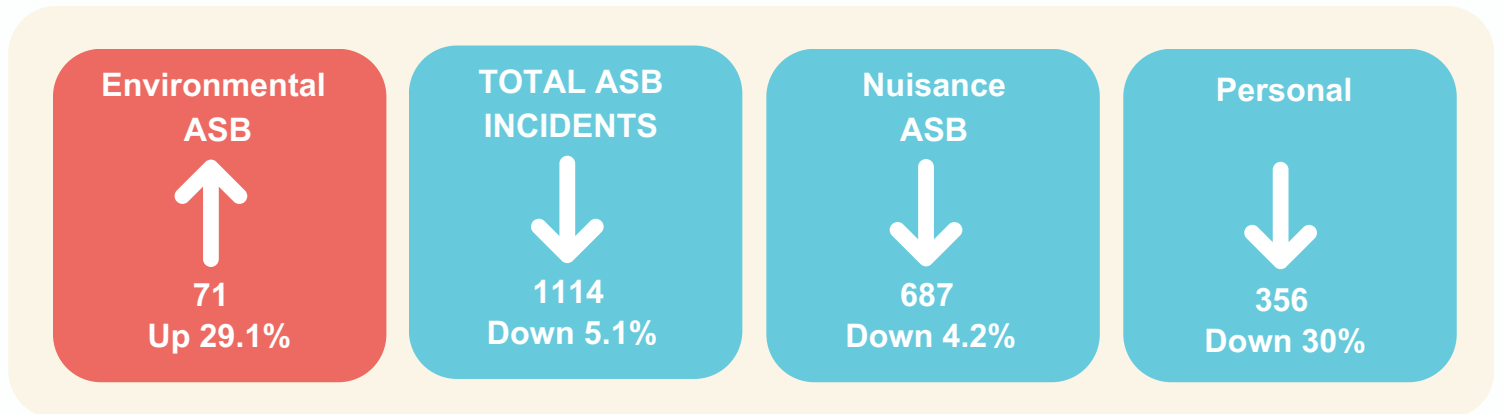
Reported Crime

Essex Police Reported Crime Data

Tendring District Between October 2023 – September 2024



Reported ASB



What Did Our Residents Say

In 2024 residents in the Tendring District said that:



87%

Feel safe in their local area during the day



55%

Feel safe in their local area after dark



56%

Feel that we are dealing with crime and antisocial behaviour in the district

CSP Priorities 2025

Tackling ASB
and the root
causes of ASB

High Harm
Violence (with a
focus on VAWG
and Domestic
Abuse)

Drug and knife
enabled Serious
Violence (Gangs
and County
Lines)

Emerging threats
and Trends (ie:
Shoplifting, Vehicle
Crime, Arson &
Criminal Damage)

What Success looks like



- Increase in perpetrators of drug related crimes being brought to justice
- Increase of people in drug and alcohol treatment services
- Increase in delivery of violence prevention programmes in schools
- Increase confidence in reporting

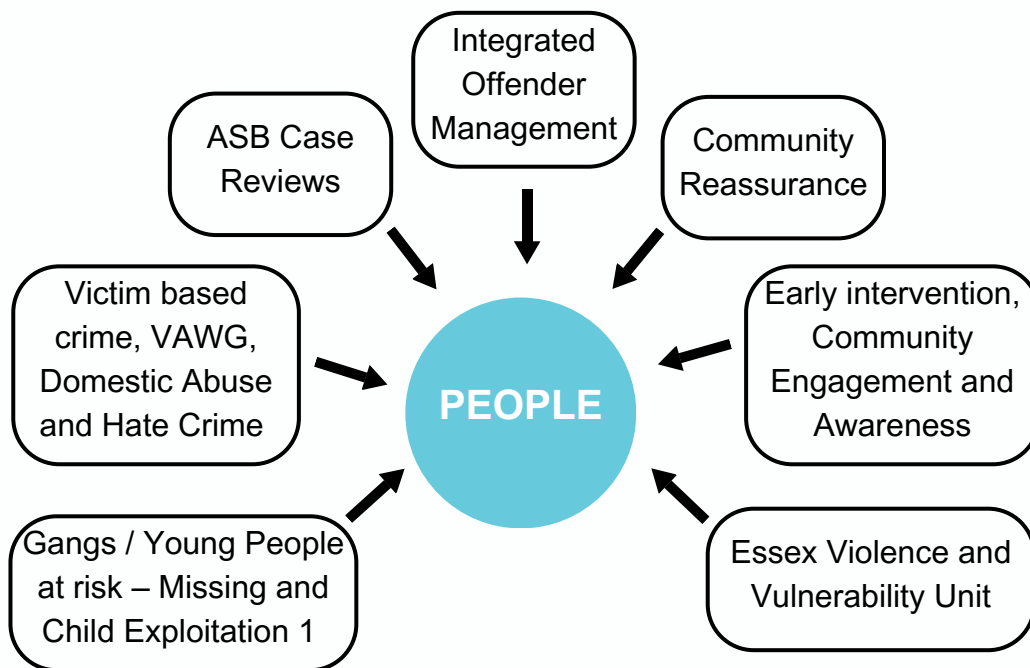


- Reduction in ASB
- Reduction in knife crime
- Reduction in violence with injury
- Reduction in repeat domestic abuse incidents (victim and perpetrator measures)
- Reduction in hate crime incidents
- Reductions in the proportion of people reporting they feel unsafe at night, in particular young people.

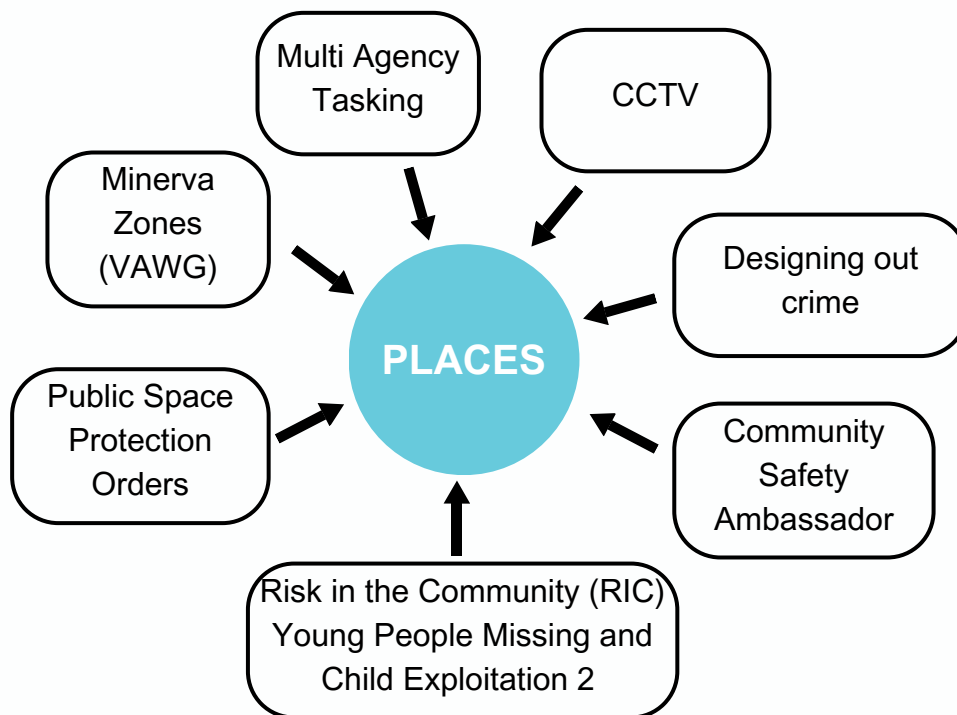


Delivery

The partnership will adopt range of approaches to focus efforts on protecting people and safeguarding them from abuse, exploitation and harm, particularly young people who are at risk of becoming involved in gangs and drug related crime and those who are victims of domestic abuse, hate crime and VAWG.



The partnership will work together to improve know hotspots locations and will provide partners to share information on areas of concern in respect of known and perceived risk in the community.





Priority One

Tackling ASB and the root causes of ASB (Including Hate Crime)

This priority will tackle anti-social issues across the district as well as targeting resources on those areas that are highlighted as hot-spots through the levels of ASB reported, or through noted increases. Our aim will be to reduce ASB, investigate the root cause of the behaviour and improve the confidence of residents and provide reassurance. This priority will also tackle Hate Crime across the District, our aim is to improve resident's knowledge of what a hate crime is, Improve access to reporting centres/ambassadors, provide confidence and reassurance to victims and communities.

What we will tackle:

We will take a joint problem solving approach in respect of those crimes that affect our residents and businesses the most including:



Anti-Social Behaviour - Managing the volume, problematic areas across the district. Utilising established operational models where appropriate (Op Dial, Op GRIP), investigating the root causes of anti-social behaviour.



Clacton on Sea Public Space Protection Order (PSPO) - Enforcing the PSPO in relation to prohibited activities.



Shoplifting - Working with Shopsafe and Essex Police Business Crime Team to provide a system to connect retailers and licensed premises with security, local police and CCTV control. Using the latest Smart Radio and a secure information sharing app 'alert!' we enable businesses to share incidents instantly as a group to promote safer spaces for customers and staff alike.



Hate Crime - To protect residents and visitors from hate crime, ensuring victims and communities are aware of what hate crime is, and where and how it can be reported.

How we will do it:



Work in Partnership - Partners will work collaboratively to identify, assess and tackle high volume / high harm issues through a co-ordinated approach utilising crime prevention activities towards the people and places that experience high volume ASB or contribute most to the problem. Approaches and referrals can be coordinated through Fortnightly Tasking and / or Problem Solving Group.

Victims will have clear ways to report and be kept informed of their case, have access to support and be given the opportunity to choose restorative approaches to tackling ASB.



ASB Case Reviews (Community Trigger) - All partners will be encouraged to empower victims of ASB by informing them about their entitlement to start a ASB Case Review and provide a cohesive response.





Intelligence Led Action - Through use of data analytical tools and partnership groups (such as Tasking or Problem Solving) to track and respond to local ASB trends in real time and provide local input to develop appropriate responses to concerns across the district. This can include development of intelligence packages to assist with targeting of resources and evaluating the success of initiatives.



Legislation - Through appropriate use of the powers within various Acts and guidance from the Home Office ASB principles, to ensure that all available remedies are considered including the use of Dispersal Orders, Community Protection Warnings, Community Protection Notices, ASB Case Reviews, Criminal Behaviour Orders, Public Space Protection Orders, Closure Orders and Injunctions, taking a balanced approach involving support from partner agencies and enforcement where necessary.



CCTV - Through ensuring the effective use of public space CCTV on targeted areas as determined by intelligence. Using Body Worn Video footage to aid prosecution where appropriate.



Intelligence and Evidence - Understand the profile of hate crime offenders, what works to address causes and impact on victims and communities. Work with Safer Essex and Essex Strategic Hate Crime Board to identify any learning and areas of development.



Education and Communication - Engage with primary and secondary schools offering hate crime educational resources through Essex County Fire and Rescue Service and Essex Police Joint Education Team.

Develop and promote partnership hate crime awareness materials and campaigns. Promote hate crime referrals to Restorative Justice Hub.



Training and Support - Develop and promote Hate Crime (HCA's) Ambassadors and Hate Incident Reporting Centres across the District (HIRC's).





Priority Two

High Harm (Emphasis on Domestic Abuse and VAWG)

Tendring Community Safety Partnership recognises that a significant number of men and boys also experience violent and abusive crimes that are captured within the cross-government Violence against Women and Girls Strategy. The CSP is committed to preventing all forms of gender based violence and addressing it wherever and however it occurs

What we will tackle:

We will take a joint problem solving approach to better protect those experiencing violent and abusive crimes.



Prepare - Intelligence between agencies is shared appropriately and effectively.



Prevent - Raise awareness through partnership campaigns, provide education to children and young people



Pursue - Use tools and powers (ASB Legislation) to keep women safe in public places. Work with partners to provide perpetrator interventions and work towards effective prosecutions.



Protect - For anyone in the district to have access to the right support services, to help them to be safe, feel safe and free from violence and abuse.

How we will do it:



Work in Partnership - Partners will work collaboratively to identify, assess and tackle high volume / high harm issues through a co-ordinated approach utilising crime prevention activities towards the people and places that experience feeling unsafe or contribute most to the problem. Approaches and referrals can be coordinated through Fortnightly Tasking and / or Problem Solving Group.



Prevention - Increase knowledge and understanding across communities and partners through training, events and campaigns. Promote Safer Streets to Tendring residents. Use evidence-based education and interventions that promote healthy relationships.



Support Victims and Survivors - Develop a joined up approach with all domestic abuse services working together to provide clear referral pathways. Support victims through Multi Agency Risk Assessment Conferencing (MARAC) and by implementing any learning points from Domestic Abuse Related Death Reviews (DARDR's)



Legislation - To ensure that perpetrators of violence against women and girls / domestic abuse are held accountable according to the law and are provided with assistance to change their abusive behaviour in order to prevent them causing harm or violence to their current, past or future partners. Reducing re-offending rates of high harm offenders.





Priority Three

Drug and Knife Enabled Serious Violence

Drug and Knife Enabled Serious Violence

This priority is aimed to work with Tendring Community Safety partners in establishing a Knife Crime Matrix to help prevent and deter individuals and groups from committing acts of serious violence and carrying/using knives. Knife crime is defined as an offence where a knife/blade is used or threatened.

What we will tackle:

We will take a joint problem-solving approach in respect of tackling knife crime and serious violence across the district.



Provide Support and opportunities - Work with partners / voluntary sector organisations to ensure people are supported and safeguarded through provision of education, training and diversionary activities.



Stakeholder Engagement and Collaboration - Build upon current relationships with stakeholders and communities to ensure a co-ordinated response to knife crime and drug related violence (such as Gangs & County Lines).



Public Spaces - Create the feeling of safety within outdoor public spaces by improving the local environment.

How we will do it:



Work in Partnership - Partners will work collaboratively to identify, assess and tackle knife and drug enabled crime. Develop a multi agency knife crime matrix, outlining how partners are going to address knife crime across the district.



Intelligence Led Approach - Use strategic intelligence data, local drug market data, county line analysis, ASB data and any relevant data from partners relating to knife crime and serious violence.

Under the Serious Violence Duty, collaborate and work with the Serious Violence Unit to tackle issues in the local area (Tendring), using the Strategic Needs Assessment.

Use all available resources and tools to target problematic areas and high risk offenders, including a targeted approach to misuse of substances and alcohol. Ensure enforcement of the Public Space Protection Order.





Young Persons - Putting communities and young people at the heart of change and develop immediate and long-term solutions, ensuring a multi-agency response to those at risk of or involved in violence.

Ensure that young people feel supported and motivated through the provision of training, education or diversionary activities. Raise awareness of the various support and intervention services that are available to those in need, in particular for individuals who have been identified as being at risk of offending or re-offending, or those who may be vulnerable to criminal exploitation (such as County Lines).

Recognise the need for workstreams to be aligned and connected to looked after children, missing persons, children in need and public health/mental health plans and campaigns. Attend MACE meetings to ensure a consistent approach to dealing with the signs and symptoms of exploitation of all kinds.

How will we know we are on track:

The Community Safety & Health and Wellbeing Board will monitor performance against each priority at a strategic level at its quarterly meetings.

Tackling ASB and the root causes of ASB (Incl Hate Crime)

- Update in relation to this priority at the quarterly Community Safety & Health and Wellbeing Board.
- The Community Safety Team will lead on effective monitoring and reporting of ASB service delivery at the six weekly Council's Operational Enforcement Group (OEG).
- The Community Safety Team will also report on-going issues and report exceptions (if required making a multi-agency referral) to the six weekly Problem Solving Meeting.
- Set up a performance framework for this theme, data will be monitored to identify trends, emerging themes and effectiveness of initiatives.
- Hate Crime statistics will be monitored by the Independent Advisory Group (IAG).
- Gather data from the Council's Hate Crime Ambassadors and the two Council HIRC's and report to the Problem Solving Meeting, referrals into Restorative Justice Hub if required.

High Harm Violence (Emphasis on Domestic Abuse and VAWG)

- Update in relation to this priority at the quarterly Community Safety & Health and Wellbeing Board.
- The Community Safety Team will lead on effective monitoring and reporting of activities and initiatives relating to VAWG and Domestic Abuse
- Set up a performance framework for this theme, data will be monitored to identify trends, emerging themes and effectiveness of initiatives.
- Engage with Southend, Essex and Thurrock Domestic Abuse Board (SETDAB), attend relevant meetings to ensure all partners are aware of County-wide training, initiatives and campaigns.
- Engage with VAWG Steering Group and Safer Essex to ensure Tendring has access to the most recent data and opportunities being discussed at these high level county wide meetings.



Drug and Knife Enabled Serious Violence

- Update in relation to this priority at the quarterly Community Safety & Health and Wellbeing Board.
- The Community Safety Team will lead on effective monitoring and reporting of activities and initiatives relating to drug and knife enabled violence.
- Set up a performance framework for this theme, data will be monitored to identify trends, emerging themes and effectiveness of initiatives.

Finance and Resources:

The Essex Police, Fire and Crime Commissioner is responsible for the funding of community safety services and so provides an annual Community Safety Grant to Tendring Community Safety Partnership, which must be utilised to deliver activity aligning to local priorities.

The partnership will continue to identify and access additional funding streams to improve community safety and enhance opportunities to increase the range of projects and initiatives being delivered.

The Council provides a community safety hub for key partners to work from. This collaborative space provides a secure environment for the Council, Police, Probation and other partners to enable sharing of information more effectively, whilst enabling a case management style approach for more complex cases to be discussed.

Supporting Strategies And Plans

Strategies	Priority 1	Priority 2	Priority 3
Tendring Council Corporate Strategy 2024 - 2028	✓	✓	✓
Essex County Fire and Rescue Strategy 2024 - 2028	✓	✓	✓
Essex Police Crime Prevention Strategy 2021 - 2025	✓	✓	✓
Essex Rural Crime Strategy 2023 - 2026	✓	✓	✓
Essex Police VAWG Strategy and Delivery Plan		✓	
Essex Strategic Hate Crime Prevention Plan 2021 – 2025 (due to be refreshed)	✓		
Essex Serious Violence Strategy		✓	✓
Essex Joint Health and Wellbeing Strategy	✓	✓	✓
Tendring Health & Wellbeing Strategy	✓	✓	✓
SET Domestic Abuse Strategy 2021 - 2025		✓	
SET Reducing Re-offending Strategy	✓	✓	✓
Tendring ASB Strategy 2024 – 2025	✓		
Tendring Prevent Strategy 2024 – 2025			✓



Tendring
District Council



The Tendring
Community Safety
Partnership